

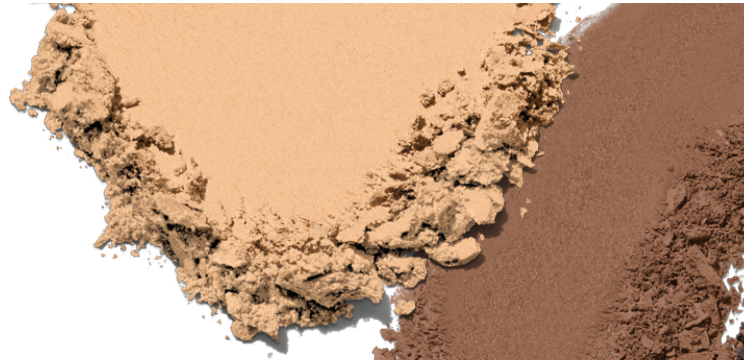
Little Book of
LOOKS
FOR LIFE

MARY KAY



**LOVE THESE
MARY KAY CHROMAFUSION[™]
LOOKS? GET MORE!**

Visit *Mary Kay InTouch*[®] to find more tools,
including how-to videos for these looks!



NEUTRAL MATTES





NEUTRAL MATTES

- 1.** Use **Sand Castle** as your base shade on the entire eyelid.
- 2.** Gently crease and define the lower lashline with **Cinnabar**.
- 3.** Enhance the eye using **Espresso** on the outer “V” of the eye.
- 4.** Add **MK Deep Brown** eyeliner and Mascara of your choice.
- 5.** Finish with **Hot Coral** blush and **Crushed Berry** gel semi-matte lipstick.





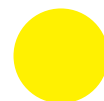
COOL METALS

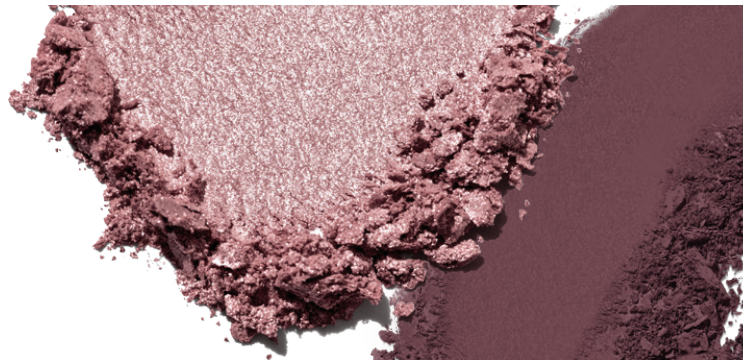




COOL METALS

- 1.** Use **Smoky Quartz** on the middle of eyelids as the base shade.
- 2.** Apply **Stormy** in the outer corners of the eyes for definition.
- 3.** Highlight the inner corners of the eyes with **Crystalline**.
- 4.** Add **MK Black** eyeliner and mascara of your choice.
- 5.** Finish with **Shy Blush** blush and **Red Smolder** gel semi-shine lipstick.





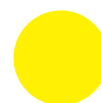
PURPLES & PLUMS





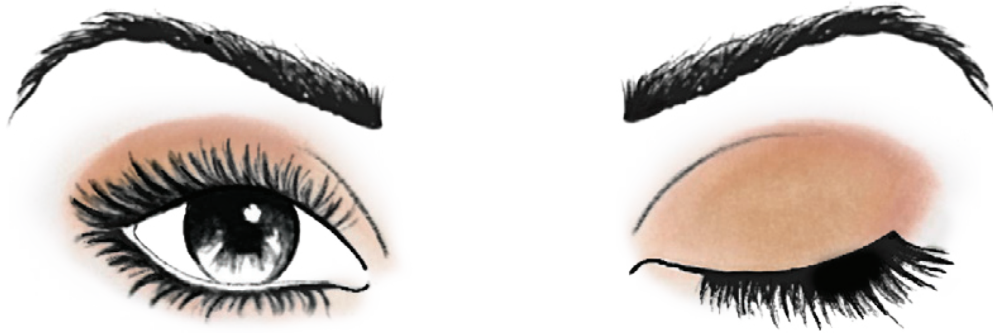
PURPLES & PLUMS

- 1.** Give eyes an all-over wash of color by using **Sunlit Rose** as the base shade.
- 2.** Add **Merlot** in the creases and in the outer “V” of the eyes.
- 3.** Apply **MK Deep Brown** eyeliner to top and bottom lashlines.
- 4.** Apply **Sweet Plum** on top of eyeliner, and finish with mascara of your choice.
- 5.** Finish with **Desert Rose** blush and **Berry Couture** gel semi-shine lipstick.



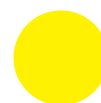


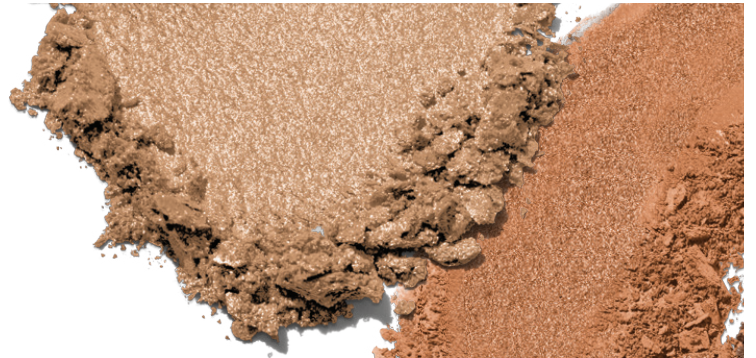
PINKS & MAUVES



PINKS & MAUVES

- 1.** Use **Rose Gold** as the base shade on eyelids.
- 2.** Apply **Dusty Rose** to the creases and lower lashlines.
- 3.** Highlight the inner corners of eyes and brow bones with **Blossom**.
- 4.** Add **MK Deep Brown** eyeliner and mascara of your choice.
- 5.** Finish with **Rosy Nude** blush and **Rosewood** gel semi-shine lipstick.





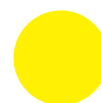
WARM METALS





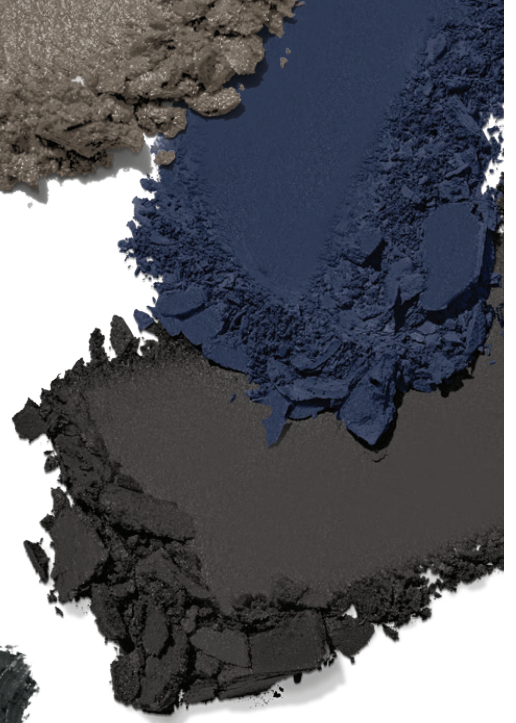
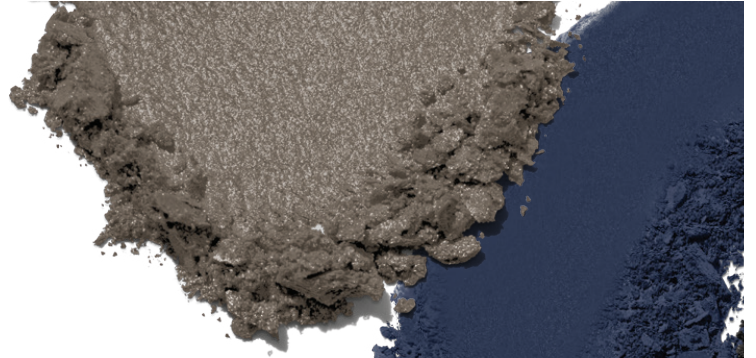
WARM METALS

1. Apply **Gold Status** as a base shade all over eyelids.
2. Accent the centers of the eyelids with **Shiny Penny**. Swipe this shade along the bottom lashlines.
3. Apply **Burnished Bronze** to the outer “V” of the eyes.
4. Add **MK Deep Brown** eyeliner and mascara of your choice.
5. Finish with **Wineberry** blush and **Scarlet Red** gel semi-shine lipstick.





STORMY BLUE





STORMY BLUE

1. Apply **Stormy** as a base shade on the eyelids.
2. Add **Evening Navy** in the creases starting from the outer corners.
3. Accent eyes using **Onyx** to blend into outer corners only and along the top lashlines.
4. Add **MK Black** eyeliner to the top lashlines, and add mascara of your choice.
5. Finish with **Golden Copper** blush and **Apple Berry** gel semi-shine lipstick.





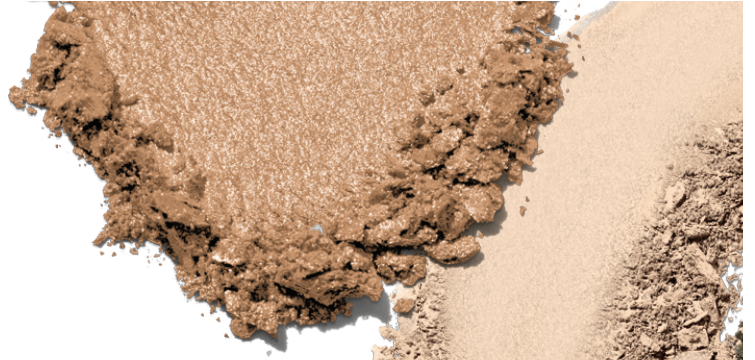
BERRIES & GOLD



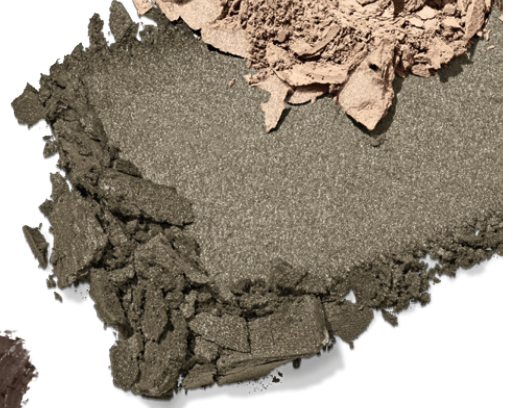
BERRIES & GOLD

- 1.** Use **Sand Castle** as a base shade on the eyelids.
- 2.** Apply **Candlelight** in the centers of the eyelids.
- 3.** Accent the outer corners of the eyelids with **Merlot**.
- 4.** Line the top and bottom lashlines with **MK Deep Brown** eyeliner, and finish with mascara of your choice.
- 5.** Finish with **Rosy Nude** blush and **Crushed Berry** gel semi-matte lipstick.





GOLDEN MOSS





GOLDEN MOSS

- 1.** Use **Biscotti** as a base on the eyelids.
- 2.** Apply **Gold Status** in the centers of the eyelids.
- 3.** Smudge **Moss** into the eye creases in a “V” shape and along the top lashlines.
- 4.** Add **MK Deep Brown** eyeliner to top lashlines, and add mascara of your choice.
- 5.** Finish with **Juicy Peach** blush and **Naturally Buff** gel semi-shine lipstick.





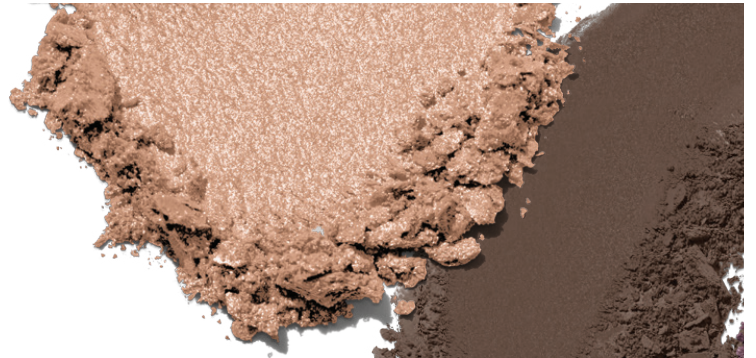
PINKS & NEUTRALS



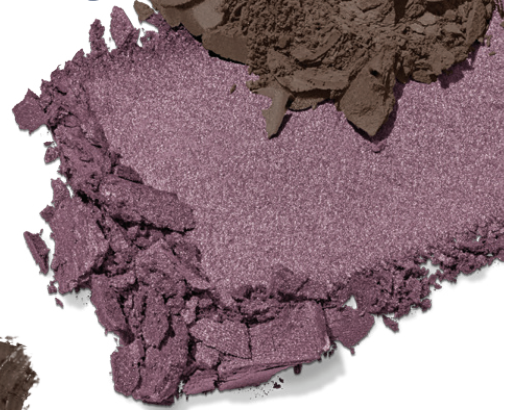
PINKS & NEUTRALS

1. Use **Cashmere Haze** as a base on the eyelids.
2. Apply **Golden Mauve** in the eye creases.
3. Highlight inner corners of the eyes with **Blossom**.
4. Apply **MK Black** eyeliner to top lashlines, and add mascara of your choice.
5. Finish with **Hint of Pink** blush and **Rosewood** gel semi-shine lipstick.





PURPLES & NEUTRALS





PURPLES & NEUTRALS

- 1.** Use **Candlelight** as a base shade on the eyelids.
- 2.** Apply **Hot Fudge** in the eye creases.
- 3.** Smudge **Frozen Iris** in a “V” shape on top of the **Hot Fudge** just in the outer corners.
- 4.** Apply **MK Deep Brown** eyeliner to top lashlines, and add mascara of your choice.
- 5.** Finish with **Darling Pink** blush and **Apple Berry** gel semi-shine lipstick.





Mary Kay Pro Palette[™]
CHEAT SHEET

Curated for deeper to very deep skin tones

MARY KAY[®]



Crème-to-Powder
Foundation, Bronze 2

Crème-to-Powder
Foundation, Bronze 5

COCOA

GOLDEN COPPER

HONEY GLOW

WINEBERRY

SAND
CASTLE

GOLD
STATUS

HAZELNUT

STARRY
NIGHT

CINNABAR

SHINY
PENNY

SUNLIT
ROSE

EVENING
NAVY

ESPRESSO

BURNISHED
BRONZE

MERLOT

MOSS

ONYX

RUSTIC

SWEET
PLUM

EMERALD
NOIR



Mary Kay Pro Palette™
CHEAT SHEET

Curated for medium to deeper skin tones

MARY KAY®



Crème-to-Powder Foundation, Beige 2		Crème-to-Powder Foundation, Beige 4	
LATTE	DESERT ROSE	GLAZED	ROSY NUDE
SAND CASTLE	BISCOTTI	SMOKY QUARTZ	CRYSTALLINE
CINNABAR	SUNLIT ROSE	CASHMERE HAZE	SHINY PENNY
ESPRESSO	MERLOT	GRANITE	MOSS
ONYX	SWEET PLUM	SHADOW	BURNISHED BRONZE



Mary Kay Pro Palette[™]
CHEAT SHEET

Curated for lighter skin tones

MARY KAY[®]



Crème-to-Powder
Foundation, Ivory 1

Crème-to-Powder
Foundation, Ivory 2

LATTE

HINT OF PINK

GLAZED

DARLING PINK

BISCOTTI

BLOSSOM

SMOKY
QUARTZ

STARRY
NIGHT

GOLD
STATUS

DUSTY
ROSE

CASHMERE
HAZE

MOSS

HAZELNUT

ROSE GOLD

GRANITE

HOT FUDGE

RUSTIC

GOLDEN
MAUVE

ONYX

BURNISHED
BRONZE





MARY KAY®

MK® / MARY KAY® / ©2018 MARYKAYINC. 10-144881 WN816609 11/18 PRINTED IN U.S.A.