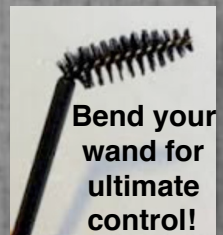
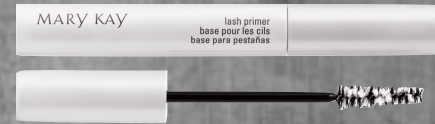


"ARE THOSE REAL?"



Mary Kay

LASH INTENSITY™ MASCARA



Bend your
wand for
ultimate
control!

5 STEPS TO PERFECT LASHES

- 1 - Comb through lashes to prevent clumps.
- 2 - Curl your lashes after they have been combed through.
- 3 - Apply MK Lash Primer™ and allow 30 seconds of drying time before 1st coat of mascara.
- 4 - Apply mascara to upper lashes. To prevent clumping...wipe the mascara wand on the inside rim of the mascara tube to get excess off for the first few applications.
- 5 - To apply mascara to the bottom lashes, turn the wand from horizontal to vertical! Now brush the bristles back and forth along the lashes. This helps for additional volume to the bottom lash line!

WHO NEEDS False Lashes when you have
MK Lash Intensity™ Mascara?

For SUPER CONTROL,

use the edge of the mascara tube and bend the tip of the brush to form a slight L shape.

This gives ULTIMATE control when applying mascara!

For EXTRA VOLUME...

In between coats, gently dust MK Translucent Powder™ over the wet mascara and apply another coat!

Apply 2 COATS OF Mascara

Try Mixing and Matching! Apply a layer of your FAVORITE MK Mascara and top it off with a Lash Intensity™ Mascara!

For a SUPER VOLUMINOUS look,

use a Black/Brown for your *first* coat and top it off with Lash Intensity™!



Lori Hogg